

Sheffield City Region

SCR ECONOMIC BLUEPRINTS UPDATE

HOUSING AND INFRASTRUCTURE BOARD
7TH JANUARY 2021

GROWTH AREA ECONOMIC BLUEPRINTS

Based on a new collaborative approach to:

Co-Design

Co-Development

Co-Invest

Co-Deliver

.....in key strategic Growth Areas as identified in the SCR Strategic Economic Plan



SEP GROWTH AREA ECONOMIC BLUEPRINTS

- Barnsley Town Centre
- Doncaster Town Centre
- Rotherham Town Centre, Eastwood & Templeborough Growth Corridor
- Sheffield City Centre
- Goldthorpe, Thurnscoe & Bolton upon Dearne
- Sheffield AMID Attercliffe & Olympic Legacy Park
- Stainforth / Unity
- GatewayEast (approved by LEP Board)

PROGRESS TO DATE

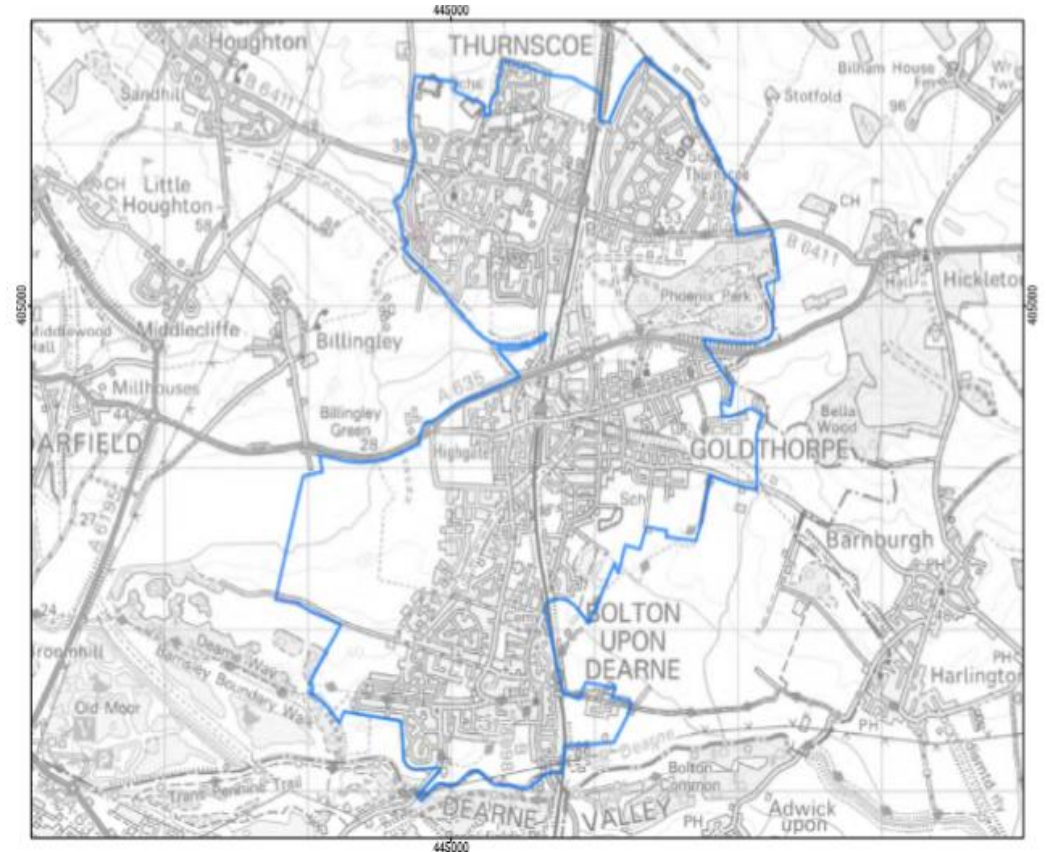
- GatewayEast Economic Blueprint agreed by LEP
- Economic Blueprints developed as discussion drafts for:
 - Goldthorpe
 - Doncaster Town Centre
 - Rotherham Town Centre, Eastwood and Templeborough
 - Sheffield City Centre
- Meetings held December 2020 with Local Authorities on content
- Work commencing January 2021 on remaining 3 Economic Blueprints

The following slides outline the emerging opportunities and ambitions within the above four Growth Areas

GOLDTHORPE, THURNSCOE & BOLTON UPON DEARNE (TOWN DEAL)

Drive long term productivity and economic growth through investment in connectivity, land use, economic assets including cultural assets, skills and enterprise infrastructure, complementing Town Deal investment

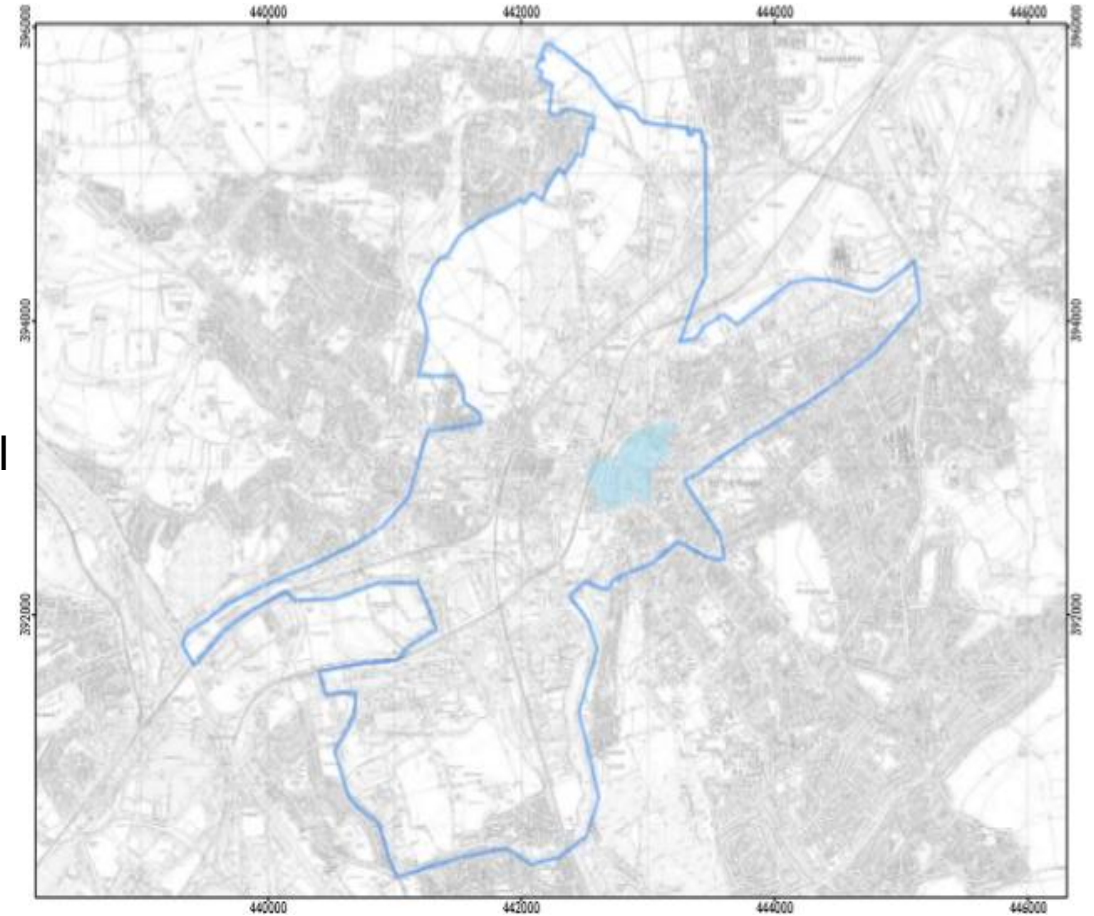
- Delivery of Town Investment Plan.
- New rail station – feasibility, design and build.
- Active travel measures – design and build
- Town centre public realm improvements
- Site enabling works for the major employment site
- Housing gap funding new homes including site enabling, shared ownership and affordable housing.
- Support the provision of ultra reliable and gigabit capable broadband
- Energy efficiency and low carbon heat measures for existing housing stock



ROTHERHAM TOWN CENTRE, EASTWOOD AND TEMPLEBOROUGH (TOWN DEAL)

Build upon the town's heritage as a market town and industrial powerhouse to become a bustling hub for living, learning, working, making and trading.

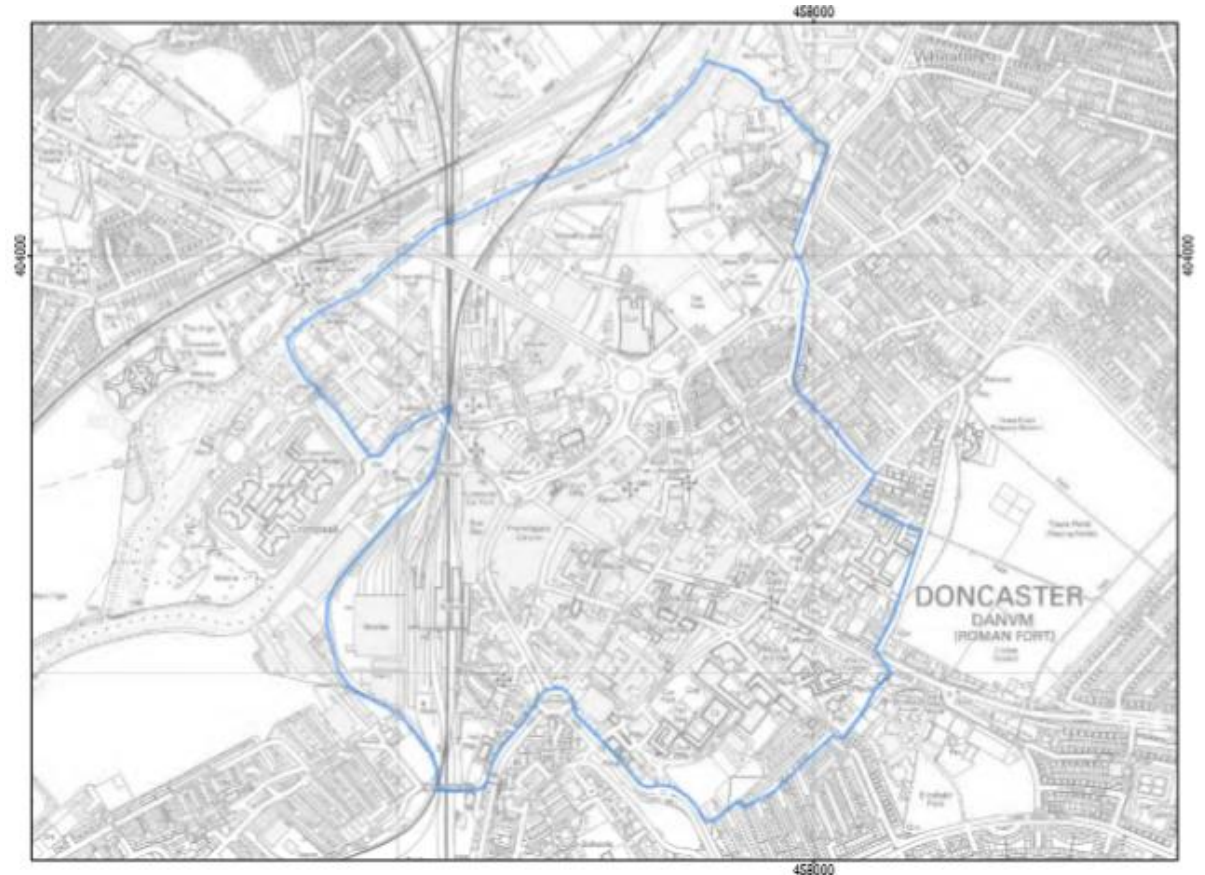
- Delivery of Town Deal Investment Plan and Town Centre masterplan inc. library and markets redevelopment
- Strategic land acquisitions
- Regeneration of vacant or underutilised sites.
- Development of new build town centre housing.
- Connectivity to major housing developments and industrial areas
- 4G/5G and full fibre infrastructure
- Tram-Train stop and Park and Ride at Magna
- Town Centre Gateway improvements
- Public realm
- Flood mitigation as part of a catchment wide approach



DONCASTER TOWN CENTRE (TOWN DEAL)

To extend /refocus the town centre, developing City Gateway, Waterfront and Minster area with mixed uses incl. new hospital and substantial new homes development and Gateway improvements to Centre.

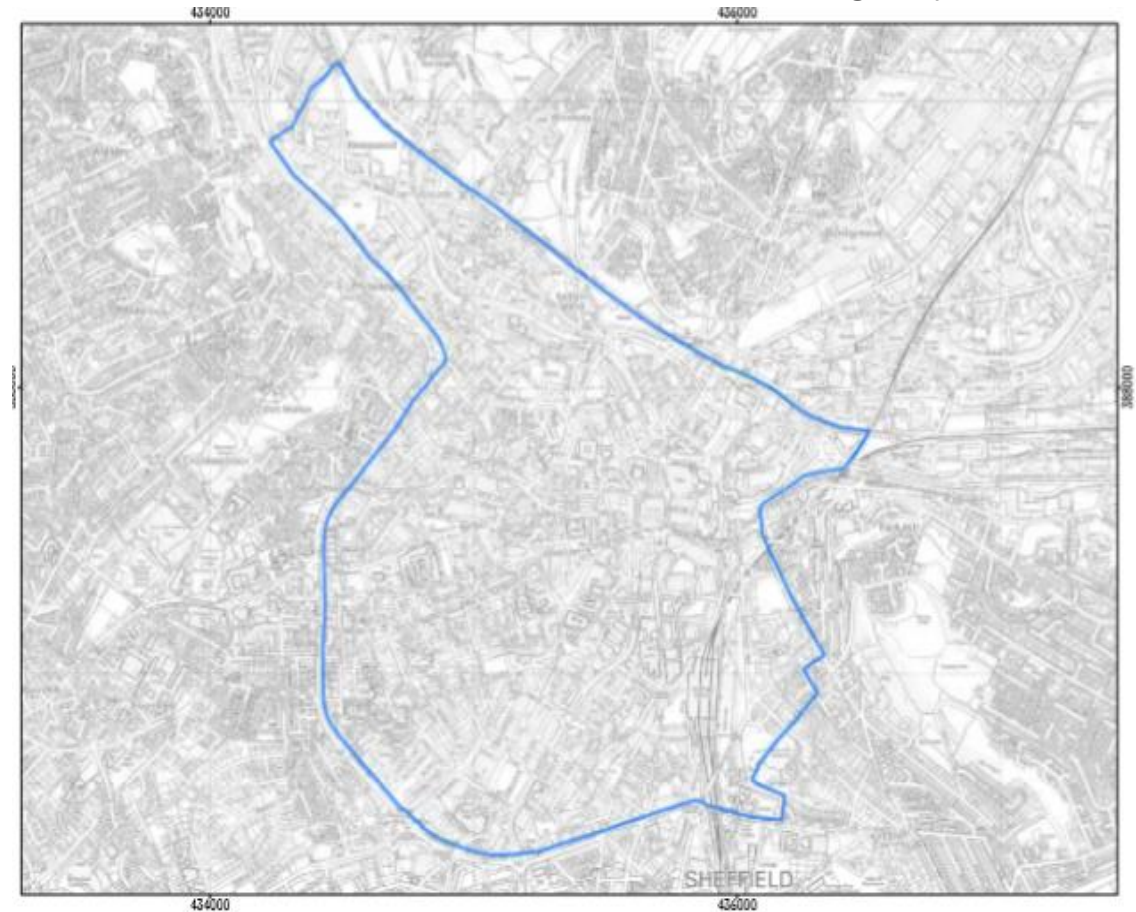
- Regeneration of vacant or underutilised town centre sites.
- Development of new build town centre housing.
- High quality town centre office development
- Increased railway station capacity
- Improved gateway welcome and connectivity to the town core and new development
- 4G/5G and gigabit broadband infrastructure
- Energy efficiency and low carbon heat retrofit measures for existing housing stock



SHEFFIELD CITY CENTRE

Regenerate key sites in and around the City Centre to maximise the opportunities that a thriving city economy can bring to Sheffield City Region

- Regeneration of vacant or underutilised town centre sites, increasing non student residential, commercial, retail and leisure uses
- Provision of city centre family homes
- Transport network improvements to unlock regeneration benefits of key sites
- 4G/5G and gigabit broadband infrastructure
- Energy efficiency and low carbon heat measures for existing housing and business stock
- Flood mitigation as part of a catchment wide approach



PHASE 2 ECONOMIC BLUEPRINTS

- The following Economic Blueprints will be prepared early in 2021:
 - Barnsley Town Centre
 - Stainforth Unity
 - AMID, Attercliffe and Olympic Legacy Park

NEXT STEPS

- Finalise high level Blueprints for each Growth Area through discussions with Local Authority Leaders
- Seek endorsement of Blueprints by MCA, LEP and LAs
- Prepare Strategic Business Cases (SBC) for each Growth Area. This will help identify the 'packages' of capital schemes to inform the project pipeline.
- Seek ownership and endorsement of Growth Area SBCs by the MCA, Local Authorities and other funding and delivery partners
- Accelerate progress of OBC's and FBC's for prioritised 'packages' of schemes to bring them upto 'shovel readiness'